

2018 AG PRODUCT CATALOGUE



**100% SATISFACTION
GUARANTEED**

Providing Service To Farmers For Over 30 Years



Atom-Jet Customer for over 10 years — Snowy Owl Farms, Sanford, MB



Atom-Jet is committed to providing the highest quality products and unmatched customer service. We do this by operating quality controlled manufacturing facilities, employing exceptional people and partnering with qualified dealers. At the heart of this philosophy is the Atom-Jet 100% Money-Back Guarantee, which is not matched by any other opener manufacturer in the market today. Unlike other guarantees, ours is not prorated. If your agricultural product has not performed to your satisfaction within the first year (12 months from purchase) **our sales and service team, in cooperation with your local dealer, will come to your farm to correct the problem.** If they cannot, Atom-Jet will refund 100% of your money.*

*Atom-Jet Money-Back Guarantee: Atom-Jet will provide a 100% money back guarantee on openers purchased within one year of the ship date provided the following conditions are met otherwise the guarantee becomes null and void: 1. Atom-Jet is notified within 1 year from date of sale. 2. **The Atom-Jet service team was granted access to resolve the concern at the time of occurrence.** 3. Openers were not operated under adverse tripping conditions (ie. 500+lbs. trip pressure) or in untillable conditions.



Dustin Williams
Souris, MB

“ We farm cereals and oil seeds. The soil type here is a sandy loam soil mainly, rolling topography, and fairly dry. This is our second year with the Atom-Jet openers. We made the switch to have side banding capabilities for liquid fertilizer.

The openers have been excellent. The openers are great at clearing trash.

We have had no plugging problems this year so far, and we've cut through many different stubble conditions.

Seeding is important to do right the first pass. You only get one shot at it and it lays the groundwork for a successful harvest. The field needs to emerge evenly and the field finish needs to be smooth enough for harvest to take place.

Some of the benefits of using Atom-Jet openers are the ability to side band our liquid fertilizer, the durability and longevity of the opener, and supporting a local business.

I would say to someone thinking about using Atom-Jet openers that they are making a good decision.”

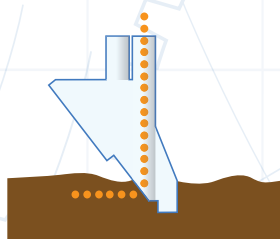
CONTENTS

Atom-Jet Agriculture Guarantee	2
Points of Difference	4
Seed Placement	6
Product Development	8
High Rate Side Band Openers	10
C-Shank Openers	12
Morris Contour Openers	16
Bourgault Paralink Openers	18
CNH Precision Hoe Openers	20
CNH Concord Edge On Openers	22
Morris Maxim Openers	24
Case IH 700 / NH P2060 Openers	26
Hoe Drill Openers	28
Case IH 500/NH P2080 Precision Disk Scrapers	30
Case IH SDX Systems	32
NH3 Fertilizer Knives	34
Potato Hiller Tines	36
Hydraulic Systems - Closed-Center System	38
Hydraulic Systems - Open-Center System	40
Parts & Accessories	42

POINTS OF DIFFERENCE

SEED/FERTILIZER PLACEMENT

- Great seed to soil contact leads to quicker germination for a superior plant stand
- Our vertically designed opener has the ability to place the seed on a **firm seedbed** immediately after opening the soil eliminating seed bounce and soil fracturing.
 - Due to a sleeker profile closure is achieved in a very short amount of travel creating an **impeccable field finish**.
 - Openers of horizontal design attempt to drive seed against the direction of travel, usually resulting in seed bounce and poor overall placement.
- Atom-Jet Agriculture pioneered the **vertical design**.
 - It's true innovation that competitors in our market continue to emulate to this day.



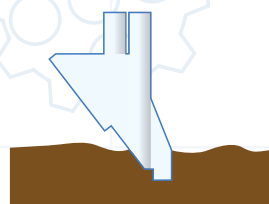
SAME PLANE PLACEMENT

- All Atom-Jet openers utilize "Same Plane" placement during the delivery of seed and fertilizer to the seedbed.
- Atom-Jet Agriculture was the first to implement, "**Same Plane**" placement to prevent the seedbed from fracturing.
 - Atom-Jet believes a fractured seedbed dries out quicker and generates the potential for uneven germination.
 - It also increases the risk of seed burn by creating an area where seed and fertilizer can merge.
- A firm seedbed produces **good seed-to soil contact**, enabling enhanced absorption of moisture and nutrients by the seed, while excluding fertilizer from the seed row.



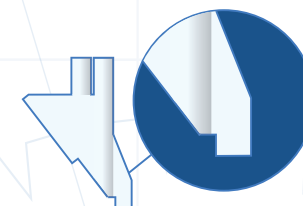
SOIL DISTURBANCE

- The shape and form of our **vertical design** isn't simply the most stylish profile available, it's practical too.
 - By causing the soil to be split, we neatly eliminate the throw that comes with bulkier horizontal openers reducing your risk of not retaining enough soil to cover the seed or cause stepping.



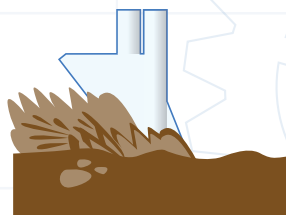
NO-PLUG TECHNOLOGY

- Through vertical design, **mud blockage and plugging** have been virtually **eliminated**.
 - The curved area under the point or "**mud spur**" is made to inhibit soil from "orange peeling"
 - Competitors' horizontal designs actually precipitate the mud curl travelling up and into the rear of the opener.
- Our **vertical design** produces a larger seed gallery, ensuring the seed drops freely onto the seedbed, minimizing internal plugging.



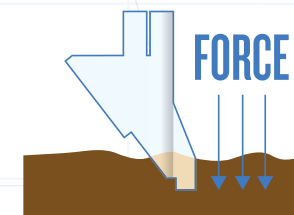
TRASH CLEARANCE

- Our **vertical** installation and smooth body is a huge asset when it comes to trash clearance.
- Trash rides up the point and clears around the vertical rounded seed tube.



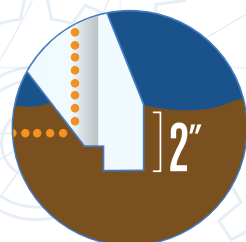
SOIL PENETRATION

- **Vertical design** simply uses the weight of your drill to **penetrate the ground** at the smallest point on your opener—the tip.
- With horizontal openers, you are attempting to puncture hardpan with the widest part of the tool.



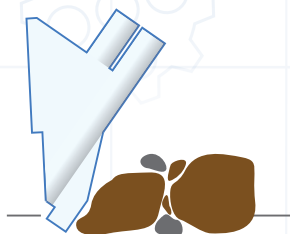
DRAFT

- With the **cost of fuel** increasing, reducing draft is of the utmost importance.
- With Atom-Jet you won't be forced to seed deeper to place the seed where it needs to be, increasing the load on your tractor and implement.
- Our **streamlined design** keeps you moving **economically** across the field.



ROCKS

- As "C"-Shanks trip, the opener actually goes deeper into the ground before coming up and out.
 - This action turns horizontal designs into some of the best rock picking tools available, placing huge amounts of stress on drill frames and shanks.
- By developing our openers to have a flatter design at the point, it produces a shape that is more likely to **float across** the top of the stone, rather than hook or pull it up into your field.



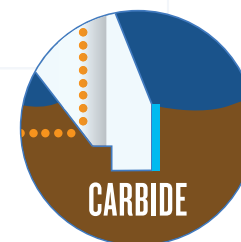
MAINTAINABLE

- Atom-Jet openers are formed from quality steel plate and fortified with high-grade hard surfacing.
 - This presents producers with the ability to extend the life of their purchase through the replacement of points, wings and tops.
- All hard surfacing can be **renewed** to its original condition.
 - If you can weld, hard surfacing can be done yourself or send the opener to us and we will recondition it for you.



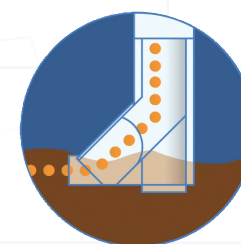
CARBIDES

- For over 20 years we have delivered the ultimate in carbide technology to producers around the globe.
- With continued research into grade, shape and installation techniques, we continue our never ending quest to **innovate better tools**.
- Compare us to the competition and see for yourself why Atom-Jet is the driving force in carbide technology.



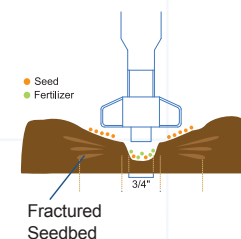
CHUTE SIZE

- The vertical design allows for a **large open gallery** right behind the point, minimizing plugging.
 - In comparison to our competitors, Atom-Jet has the advantage of the largest seed gallery.
- Double shoot openers that direct seed to the side have a **large seed chute**.
 - This allows for seeding of broader seeds such as peas and beans.
 - The large chute allows the seed to easily get around the bend, reducing the risk of plugging.



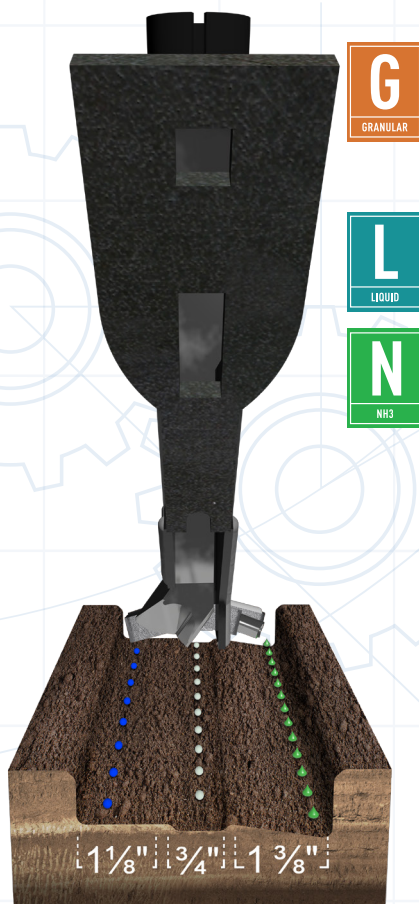
CONCERNS WITH LOWER POINT OPENERS

- Fractures the soil allowing the escape of moisture content
- Risk of uneven germination
- Potential for seed to mix in with fertilizer as the seed rolls down the shoulder of the furrow
- Increased soil throw



SEED PLACEMENT

TWIN BAND



- Superior separation between NH₃ and seed
- Triple shoot capacity
- Allows for higher application rates of NH₃

SIDE BAND GRANULAR



- Seed chute is carbide protected
- Separation between the seed and fertilizer
- Seed is placed accurately behind the point

SINGLE SHOOT SPREAD



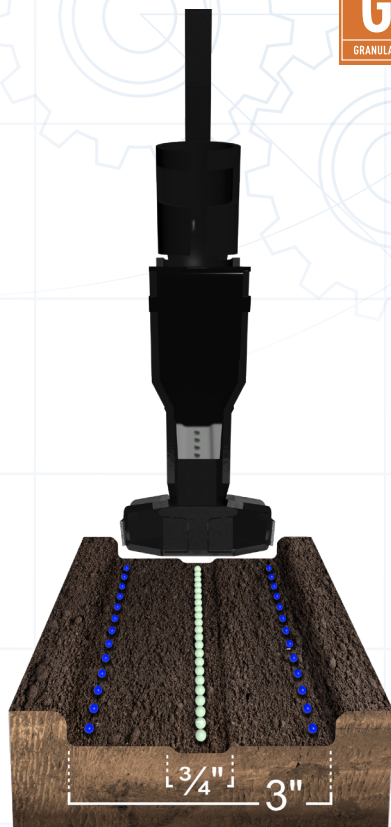
- Creates a firm seedbed
- Provides greater seedbed utilization
- Benefits wider row spacing

SIDE BAND LIQUID



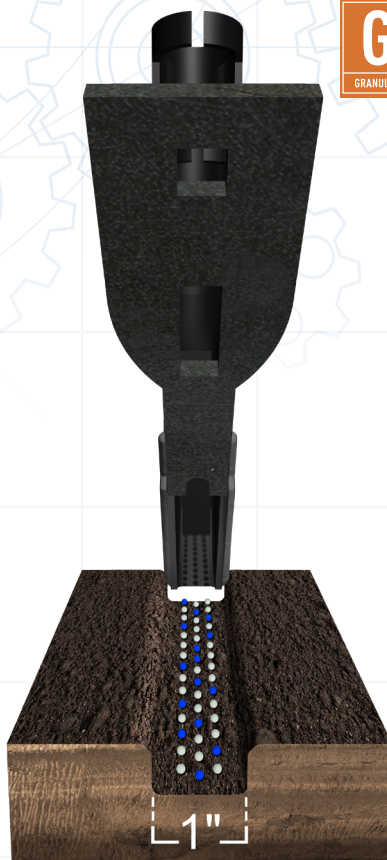
- Liquid tube protected in behind the wing
- Fertilizer is allowed to stream out providing better separation
- Accurate seed placement

PAIRED ROW GRANULAR



- Firm seedbed produces superior seed to soil contact
- Even germination
- Consistent placement of fertilizer separating it from the seed

SINGLE SHOOT



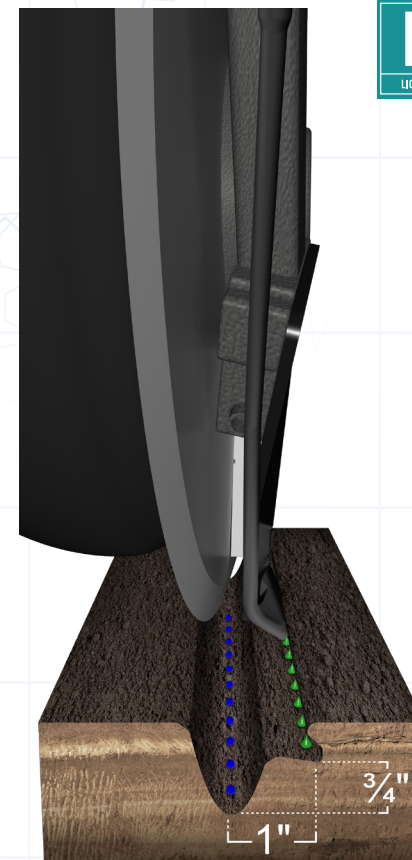
- Accurate seed placement
- Minimal soil disturbance
- Superior soil penetration

HIGH RATE SIDE BAND



- Seed and fertilizer are directed to opposite sides of the furrow for increased separation
- High application rates on same-plane with minimal increase in disturbance
- Seed and fertilizer bands are placed uniformly

DUAL SHOOT LIQUID SCRAPER



- Advantage of double shooting for a one-pass application
- Excellent seed-fertilizer separation
- Seed placed accurately in the disk cut resulting in exceptional seed placement

PRODUCT DEVELOPMENT

CONSERVAPAK

Atom-Jet is proud to launch our new ½" fertilizer knife for the John Deere 1870 ConservaPak. The ½" narrow banding profile maintains the low disturbance and superior furrow closing expected from a ½" knife. Our patented (9,066,462 B2) carbide insert provides the durability that was requested from growers seeking a harder wearing product. Currently, our R&D team is developing paired row and side band openers to complement our newly launched fertilizer knife. The paired row opener profile was designed to direct soil flow to seal the trench, ensuring no seed falls into the fertilizer band. The paired row chutes provide accurate seed placement creating a distinct paired row, providing safe separation.



**NEW PRODUCT
LAUNCH**

CPAW00

HIGH RATE PAIRED ROW

To service some customers' specific requirements, we have designed a paired row opener with an extended point, placing the fertilizer directly behind the point and below the seed. The paired row cup was designed to direct soil flow to seal the trench, ensuring no seed falls into the fertilizer band. In the northwest United States Palouse region, the extended point has been used to help mitigate drill skewing in their steep hills, while in Australia the extended point can be used to break through the rhizo layer, improving seeding conditions.





CNH DS GRANULAR & NH3

After demands from growers looking for a double shoot option, a new product line is being developed for application of different fertilizer types. Working cooperatively with farmers that have experience operating this drill, extensive testing is ongoing for granular and NH3 fertilizers. Placing fertilizer into the disk cut and seed to the side behind the wing, reduces seed-soil contact problems produced by hairpinning, while soil flowing over the wing provides superior seed coverage.

- Patent Pending UHMW insert mitigates side loading on the disk leading to extended life
 - Low friction surface lowers turning resistance causing smoother disk operation
 - Insert prevents mud and trash from building inside the scraper
- Trash shield incorporated into scraper saving costs
- Double shoot NH3 scrapers will be available in all tube sizes
- Adjustable position to match disk wear
- Strategically placed carbides protect all high wear surfaces



Don Arksey
Senior R&D Coordinator,
Atom-Jet Agriculture

“ Atom-Jet’s R&D department was started by developing and building products based on farmers’ needs. Using this model we have been developing innovative products resulting in the release of eight patents over the years. Working with original equipment manufacturers gives us the knowledge to develop openers that optimize drill performance. Atom-Jet is still committed to working directly with growers and encourages their involvement in designing solutions to the seeding challenges faced today. ”

HIGH RATE SIDE BAND OPENERS

HIGH RATE SIDE BAND

The High Rate Side Band was designed from the field up after customers approached Atom-Jet about the need for a side band opener with the ability to run higher rates of fertilizer while maintaining seed safety. This product is an excellent choice for higher rate applications.

- Seed and fertilizer are directed to opposite sides of the furrow for increased separation
- High application rates on same-plane with minimal increase in disturbance
- Larger chute size allows for seeding of broader seeds
- Short opener profile allows furrow to close quicker behind the opener
- Provides improved moisture conservation by not digging up soil with an extended point, but by placing product on the same plane



NEW PRODUCT LAUNCH



“ The new Atom-Jet High Rate Side Band opener is far superior to the mid-row banders I was using. I saw better, more even emergence and a stronger root system with the Atom-Jets. This was evident on canola, peas, lentils and wheat. I am very happy with these Atom-Jet openers. ”

Steve Hofer
South Bend Colony, AB



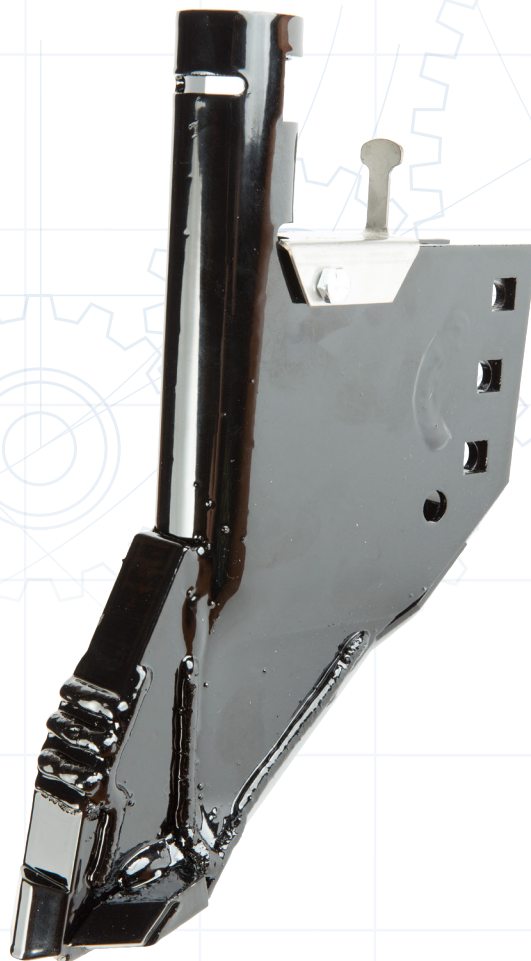
“ After trying several manufacturers' openers side by side on our farm, this opener clearly stood out. It created great seed placement, separation and even emergence. ”

Dave Waldner
New Rockport Colony, AB



C-SHANK HIGH RATE SIDE BAND

1" Left CCGCX0
Right CCGCY0
3/4" Left CCGAX0
Right CCGAY0



MORRIS MAXIM & BOURGAULT PARALINK HIGH RATE SIDE BAND

1" Left CDGCX0
Right CDGCY0
3/4" Left CDGAX0
Right CDGAY0



CNH PRECISION HIGH RATE SIDE BAND

1" Left CBGCX0
Right CBGCY0
3/4" Left CBGAX0
Right CBGAY0



MORRIS CONTOUR HIGH RATE SIDE BAND

1" Left CAGCX0
Right CAGCY0
3/4" Left CAGAX0
Right CAGAY0

C-SHANK OPENERS

C-SHANK

Atom-Jet openers are compatible with all varieties of C-Shank drills. With 30 years of developing openers you can trust, Atom-Jet provides reliable, long-lasting, and rugged openers designed for all conditions. Originally designed for zero/minimum tillage, Atom-Jet C-Shank openers work great in all tillage and seeding practices.

- All wear points are carbide protected providing extended life
- Proven not to plug in the worst conditions
 - Opener of choice in the Red River Valley – (gumbo)
- Excellent seed placement and fertilizer separation achieved by the same plane design
- Boots are made of a high gauge steel to protect against breaking
- Compatible with all C-shank drills



Dan Adamson
Danval Stock Farms Ltd.
Sedgewick, AB

“ We tried the competition but found Atom-Jet had superior seed placement and emergence as well as less soil disturbance. Atom-Jet openers pull much easier and this saves us time and money. ”

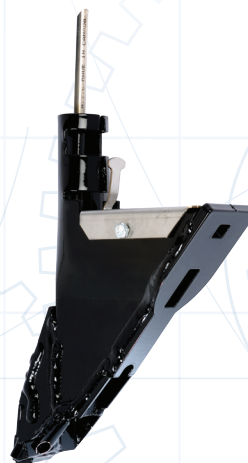


Dan is running Atom-Jet Twin Band openers on two 62' John Deere 1830 drills. He puts down 90 lbs. of dry fertilizer, as well as 65 lbs. of NH3 with his seed.



C-SHANK 3\"/>

CCDTD0



C-SHANK SIDE BAND .500 NH3

1" Left CCJCH0
Right CCJCJ0
3/4" Left CCJAH0
Right CCJAJ0



C-SHANK PAIRED ROW LIQUID .250

3" CCDTD0
4" CCETEM



C-SHANK SINGLE SHOOT SPREAD

3" CCBTD0
4" CCCTE0



C-SHANK SINGLE SHOOT

1" CCAC00
3/4" CCAA00



C-SHANK TWIN BAND

Left CCHTF0
Right CCHTG0



C-SHANK SINGLE SHOOT FRONT DELIVERY SPF

1" CCAC0W



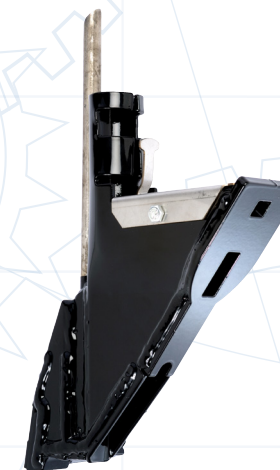
C-SHANK SIDE BAND LIQUID .250

1" Left CCFCAB
Right CCFCB0
3/4" Left CCFAA0
Right CCFAB0



C-SHANK TWIN BAND MAXQUIP

Left CCHTFL
Right CCHTGL



C-SHANK SIDE BAND LIQUID .375

1" Left CCFCAA
Right CCFCBA
3/4" Left CCFAAA
Right CCFABA



C-SHANK SIDE BAND GRANULAR

1" Left CCGCA0
Right CCGCB0
3/4" Left CCGAH0
Right CCGAJ0



C-SHANK 4" PAIRED ROW GRANULAR

CCETE0



C-SHANK SIDE BAND GRANULAR SPF .375

1" Left CCGCAD
Right CCGCBD
3/4" Left CCGAHD
Right CCGAJD



C-SHANK TWIN BAND .250

Left CCHTFR
Right CCHTGR



C-SHANK SIDE BAND LIQUID .250 SPF .375

1" Left CCFCAD
Right CCFCBD
3/4" Left CCFAAD
Right CCFABD

MORRIS CONTOUR OPENERS

Atom-Jet openers for Morris Contour get your crops off to the best start possible. Whether it's the Contour I or Contour II, Atom-Jet has the opener to fit your needs. The opener's leading-edge design maintains a true vertical position. Atom-Jet openers work in conjunction with Morris Contour's parallel linkage for ultra-precise seed and fertilizer placement, along with an improved ability to shed trash. This makes Atom-Jet openers a good fit for the Contour drill.

- Non-plugging technology
- Simple all-steel construction improves wear and durability
- Excellent wear – all high-wear points, wings and chutes are carbide protected
- The sleek design results in less steel running through the field, reducing draft
- Superior performance with a cost-effective opener



Byron Redlick
Biggar, SK

“ We have Atom-Jet Twin Band openers on our Morris Contour 1. Our soil type is loam to sandy loam. We typically put 100 lbs of NH₃ down when seeding canola and have not seen any germination problems. Durability has been excellent as we have approximately 15,000 acres on these openers with minimal resurfacing. Due to the vertical design they pull easier, saving on fuel, and they do not pull as many rocks as our previous openers. I would certainly recommend these openers to anyone wanting a durable, easy pulling opener with good seed and fertilizer placement. ”



MORRIS CONTOUR SINGLE SHOOT

1" CAAC00
3/4" CAAA00



MORRIS CONTOUR SINGLE SHOOT SPREAD

3" CABTD0
4" CACTE0



Carbide
Insert



MORRIS CONTOUR TWIN BAND

Left CAHTF0
Right CAHTG0



MORRIS CONTOUR PAIRED ROW

3" Granular CADTD0
4" CAETE0
3" Liquid CADTDM
4" CAETEM



MORRIS CONTOUR SIDE BAND LIQUID .250

1" Left CAFCA0
Right CAFCB0
3/4" Left CAFAA0
Right CAFAB0



MORRIS CONTOUR SIDE BAND GRANULAR

1" Left CAGCA0
Right CAGCB0
3/4" Left CAGAH0
Right CAGAJ0



BOURGAULT PARALINK

OPENERS

Atom-Jet's R&D team have developed our openers to fit the Bourgault Paralink drill's shank specifications, providing consistent ground penetration and constant seeding depth control over changing field terrain, resulting in quick, even germination. Atom-Jet openers work with all Bourgault Paralink drills, whether it's a 3310 PHD or all three configurations of 3320: SE, QDA, and XTC. Atom-Jet's patented Twin Band design for Paralink drills provides an option to Mid Row Banders.

Twin Band benefits versus Mid Row Banders:

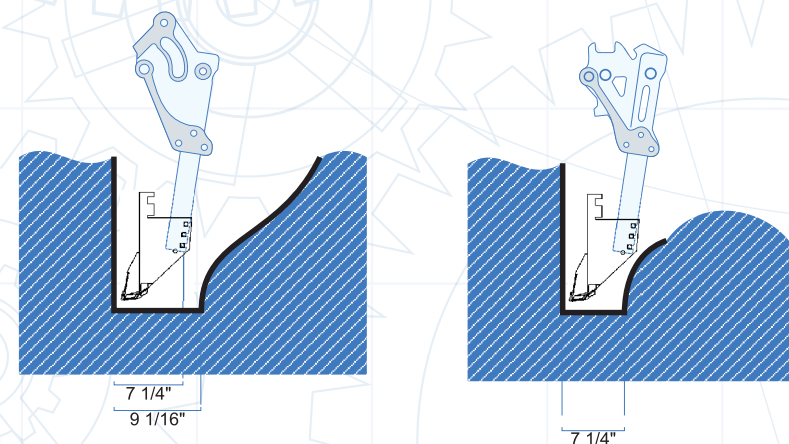
- Initial cost savings
- Safe seed & fertilizer separation at higher rates
- Ability to apply granular, liquid and NH3 fertilizer
- Better trash clearance
- Less maintenance
- Weight saving on equipment resulting in less wear and tear on equipment
- Less HP requirements



Lawrence Crywell
Manor, SK

“ Our Atom-Jet Side Band openers work really good on our Bourgault 3320. Ground penetration is not a problem as they penetrate without the need of any extra pressure. They also leave the field very smooth. I had no plugging issues and was not in the best seeding conditions. Atom-Jet's service is excellent. If everyone provided this type of service, farming would be a cinch. ”

Atom-Jet Openers fit within the design tolerances of Bourgault Paralink drills.



Opener must fit within space allowed by the manufacturer.



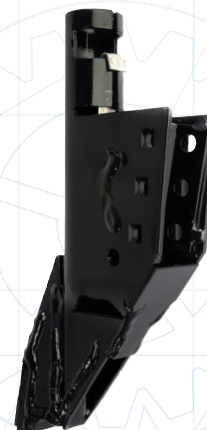
BOURGAULT PARALINK TWIN BAND

Left CDHTF0
Right CDHTG0



BOURGAULT PARALINK SIDE BAND GRANULAR SPF .375

1" Left CDGCAD
Right CDGCB0
3/4" Left CDGAHD
Right CDGAGD



BOURGAULT PARALINK SINGLE SHOOT

1" CDAC00
3/4" CDAA00



BOURGAULT PARALINK PAIRED ROW LIQUID .250

3" CDDTDM
4" CDETEM



BOURGAULT PARALINK PAIRED ROW GRANULAR

3" CDDTD0
4" CDETE0



BOURGAULT PARALINK SIDE BAND .500 NH3

1" Left CDJCH0
Right CDJCJ0
3/4" Left CDJAH0
Right CDJAJ0



BOURGAULT PARALINK SIDE BAND LIQUID .250

1" Left CDFCA0
Right CDFCB0
3/4" Left CDFAA0
Right CDFAB0



CNH PRECISION HOE OPENERS

Atom-Jet openers perform well with the patented true parallel link row unit on the New Holland P2070 and CIH 800. The design angle of the opener works in relation to the soil surface providing a consistent seed depth and faster, uniform crop emergence. The narrow profile of Atom-Jet openers results in smoother field finish and superior trash clearance. The carbide protected opener improves the life of the opener in all conditions. The opener is an excellent choice for these CNH drills.

- Same-plane technology improves disturbance with accurate seed placement
- Designed not to plug in different soil conditions
- Opener selection to meet all needs - Single & Double shoot / Liquid, Granular & NH₃ fertilizers applications
- Improved opener performance with significant cost savings



Wayne Johnson
WEJCO Farms Inc., Stanley, ND

“ Surprisingly I’m very satisfied. I was very skeptical at first, but over the last three years I have raised some of the best crops I’ve ever had. In canola I can do a true one-pass seeding operation, putting down all my “N” in the form of anhydrous and using the granular tube for my “P” and “Sulfur”, with the seed out the third shoot. I’ve never seen any seed damage, even when using very high rates of “N”. These openers saved me an additional pass for broadcasting the granular products, an additional savings of \$20 plus per acre. They stand up very well; in the three seasons I’ve used them, I’ve only broken a single opener, and I farm some rocky ground.

If someone were to ask me what openers I’d purchase on my next drill, it would be the Atom-Jet Twin Band openers. ”



CNH PRECISION HOE SIDE BAND GRANULAR

1" Left CBGCA0
Right CBGCB0
3/4" Left CBGAH0
Right CBGAJ0



CNH PRECISION HOE PAIRED ROW GRANULAR

3" CBDTD0
4" CBETE0



CNH PRECISION HOE PAIRED ROW LIQUID .250

3" CBDTD0
4" CBETEM



CNH PRECISION HOE SIDE BAND LIQUID .250

1" Left CBFCA0
Right CBFCB0
3/4" Left CBFAA0
Right CBFAB0



CNH PRECISION HOE SINGLE SHOOT

1" CBAC00
3/4" CBAA00
1/2" CBAS00



CNH PRECISION HOE SINGLE SHOOT SPREAD

3" CBBTD0
4" CBCTE0



CNH PRECISION HOE TWIN BAND

Left CBHTF0
Right CBHTG0

CNH CONCORD EDGE ON

OPENERS

Atom-Jet Edge On openers that fit your CNH Concord are ideal for every condition of soil, including gumbo. Our non-plugging technology has been a benefit to farmers running this drill. Atom-Jet openers are compatible with row closers with the use of a shank extension and are an excellent fit with the Concord drill.

- Front delivery - placing the seed directly behind the point giving accurate seed placement
- Smooth vertical design allowing trash to clear
- Non-plugging in all types of different soils
- Carbide protection on all high wear areas



Bob Wiens
Domain, MB

“ We run a 50-foot Concord with 10-inch spacing in the Red River Valley clay southwest of Winnipeg. When our soil is wet it is miserable to work with. The main benefit of the Atom-Jet openers is less plugging in the heavy soils. With our previous openers, the soil would stick, and plugging problems were an issue. In comparison to previous openers the Atom-Jet openers were able to run a bit shallower, which made it easier to pull. I would definitely recommend Atom-Jet openers to others because they don't plug on us. ”



CNH CONCORD EDGE ON SINGLE SHOOT SPREAD

3" CHBTD0
4" CHCTE0



CNH CONCORD EDGE ON TWIN BAND

Left CHHTF0
Right CHHTG0



CNH CONCORD EDGE ON SINGLE SHOOT

1" CHAC00
3/4" CHAA00



CNH CONCORD EDGE ON SIDE BAND GRANULAR

1" Left CHGCA0
Right CHGCB0
3/4" Left CHGAH0
Right CHGAJ0



CNH CONCORD EDGE ON PAIRED ROW GRANULAR

3" CHDTD0
4" CHETE0



CNH CONCORD EDGE ON PAIRED ROW LIQUID .250

3" CHDTD0
4" CHETEM



CNH CONCORD EDGE ON SIDE BAND LIQUID .250

1" Left CHFCA0
Right CHFCE0
3/4" Left CHFAA0
Right CHFAB0

MORRIS MAXIM OPENERS

Atom-Jet openers are the optimal match for Morris Maxims I and II. The land following ability of the Maxim drill with the benefit of a flexible frame provides seeding accuracy and dependability with locked-in depth control. The use of Atom-Jet openers will maximize seed-to-soil contact based on packer width and shank spacing options.

- Front delivery - placing the seed directly behind the point giving accurate seed placement
- Smooth vertical design allowing trash to clear
- Reliable, rugged opener with all-steel construction
- Designed to allow for control of different seeding depths



Jeff Hoffmann
Annaheim, SK

“ I have been using the Atom-Jet side band openers for the last eight years on my Morris Maxim II air drill. They were extremely easy to install. I farm in heavy black soil and feel the wear on the opener is exceptional. They have performed very well using different rates of seed and dry fertilizer. Plugging has never been an issue with them in any soil conditions that I have used them in. They cut a nice level furrow and I feel my seed and fertilizer placement has been more accurate therefore giving me a nice, even emergence. I will continue to use and recommend them in the future. ”



MORRIS MAXIM SIDE BAND GRANULAR

1" Left CDGCA0
Right CDGCB0
3/4" Left CDGAH0
Right CDGAJ0



MORRIS MAXIM TWIN BAND

Left CDHTF0
Right CDHTG0



MORRIS MAXIM PAIRED ROW LIQUID .250

3" CDDTDM
4" CDETEM



MORRIS MAXIM SIDE BAND LIQUID .250

1" Left CDFCA0
Right CDFCB0
3/4" Left CDFAA0
Right CDFAB0



MORRIS MAXIM SINGLE SHOOT SPREAD

3" CDBTD0
4" CDCTE0



MORRIS MAXIM SINGLE SHOOT

1" CDAC00
3/4" CDAA00



MORRIS MAXIM PAIRED ROW GRANULAR

3" CDDTD0
4" CDETE0

CASE IH 700 / NH P2060 OPENERS

CASE IH 700 / NH P2060

Whether it is for your CIH 700 or NH P2060, Atom-Jet has an opener that will fit your drill. The narrow profile of Atom-Jet openers results in smoother field finish, minimal draft, and superior trash clearance. The carbide protected opener improves the life of the opener in all conditions. The openers are compatible with row closers by using a shank extension making them a superior choice for these drills.

- Seed is placed directly behind the point – Front Delivery – ensuring accurate seed placement
- The vertical design allows for excellent trash clearance
- Design of the low profile opener results in less steel being pulled in the field, reducing draft
- Same-plane seed placement ensures seed is placed on a firm seed bed, promoting germination



Evan Elliott
Reston, MB

“ We farm 6,000 acres of Newdale clay with 3 Concord drills at Reston, MB where in the last five years it has been wetter than you would believe. We chose Atom-Jet openers because there is less soil disturbance. Some of the other brands left a rough finish, making it hard on the combine and swather. Our current openers have been on since 2011. Trash clearance on the openers is very good. We have gone through some very thick cattails where only a few wrapped around the shank, but no openers plugged. The vertical design helps with trash clearance as there is nothing for the trash to hang up on. I would recommend Atom-Jet openers as they are easier to pull, with good trash clearance and leave the field with a smooth finish. ”



CIH 700/NH P2060 EDGE ON TWIN BAND

Left CHHTF0
Right CHHTG0



CIH 700/NH P2060 EDGE ON SIDE BAND GRANULAR

1" Left CHGCA0
Right CHGCB0
3/4" Left CHGAH0
Right CHGAJ0



CIH 700/NH P2060 EDGE ON SINGLE SHOOT

1" CHAC00
3/4" CHAA00



CIH 700/NH P2060 EDGE ON SINGLE SHOOT SPREAD

3" CHBTD0
4" CHCTE0



CIH 700/NH P2060 EDGE ON PAIRED ROW GRANULAR

3" CHDTD0
4" CHETE0



CIH 700/NH P2060 EDGE ON PAIRED ROW LIQUID .250

3" CHDTD0
4" CHETEM



CIH 700/NH P2060 EDGE ON SIDE BAND LIQUID .250

1" Left CHFCA0
Right CHFCE0
3/4" Left CHFAA0
Right CHFAB0

HOE DRILL OPENERS

Our hoe drill openers provide a quality and cost-effective solution for growers who still utilize Hoe Drill seeding units. Carbides added to the point provide superior opener life. Vertical design creates a consistent seedbed allowing for even germination and better emergence. With an optional liquid configuration throughout the product range, you can depend on Atom-Jet.

- Double carbide point
- Excellent seed placement
- Plug free points
- Excellent ground penetration
- Maintainable/repairable
- All configurations available for liquid application



Andrew Mazer
Kemnay, MB

“ We farm 10,000 acres in Kemnay, Manitoba. We have had Atom-Jet openers for two years. We switched after we had used a lot of different openers. With Atom-Jet being a local company, we know the engineers who make a well thought out, high quality, and durable product. Compared to other openers, Atom-Jet’s durability is above standard. With Atom-Jet, we replace less openers per year compared to other brands. The Atom-Jet openers have fantastic seed placement. The trash clearance on these boots is exceptional; we have never experienced any problems with them in that sense. They are a fantastic boot. I would recommend Atom-Jet openers due to their quality of build and their very advanced design. ”



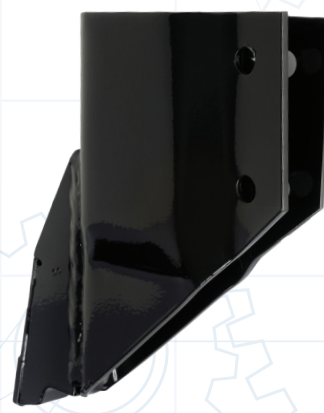
**JOHN DEERE
9300/9400 LIQUID**

Left EJFJA0
Right EJFJB0



**MORRIS MH
310/3100**

ELAA00



**CASE IH
7200/8500**

ECAB00



**JOHN DEERE
9300/9400**

$\frac{3}{4}$ " EJAJ00
1" EJAK00



**MORRIS M11
SEED RITE**

$\frac{3}{4}$ " EMAB00
1" EMAC00



**VERSATILE/
NOBLE**

EPAB00



**CASE IH
7200/8500 LIQUID**

Left ECFJA0
Right ECFJB0

CASE IH 500/NH P2080

PRECISION DISK SCRAPERS

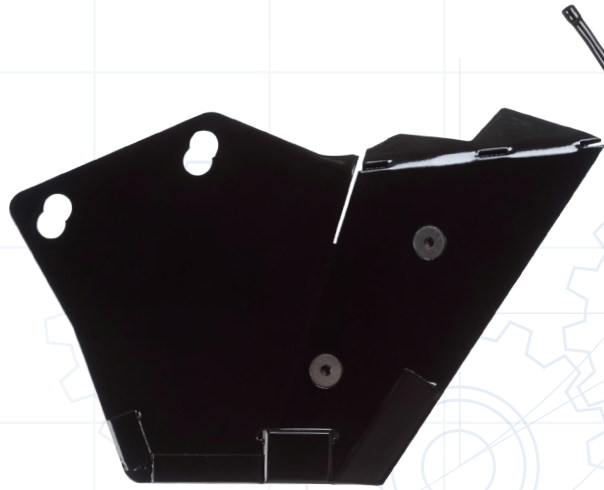
Atom-Jet is pleased to launch the Double & Single shoot scrapers for the CaseIH PD500 and New Holland P2080 drills. After demands from growers wanting a double shoot option, extensive testing and working cooperatively with farmers experienced in operating this drill, this product is ready for the field.

- Patent Pending UHMW insert mitigates side loading on the disk leading to extended life
 - Low friction surface lowers turning resistance causing smoother disk operation
 - Insert prevents mud and trash from building up inside the scraper
- Trash shield is incorporated into the scraper, saving costs
- Double shoot liquid scrapers are available in all tube sizes
- Adjustable position to match disk wear
- Strategically placed carbides protect all high wear surfaces



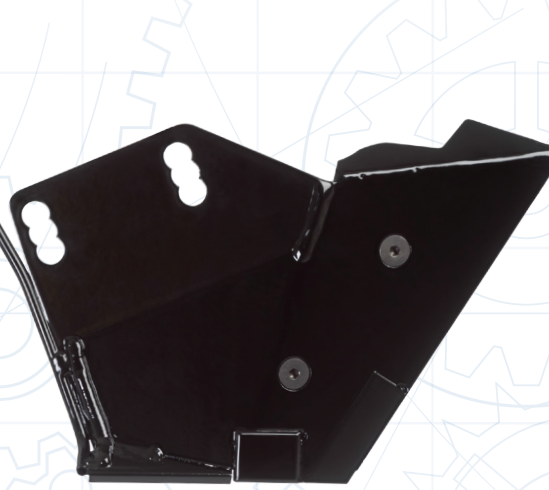
Roger Bendickson
Garrison, ND

“The first Atom-Jet scrapers we had on a Case SDX drill a number of years ago. This spring we outfitted our four Case PD500 drills with Atom-Jet single shoot scrapers. We’re seeding about 2" to 2½" from the surface but yet our seed is only an inch into the ground at the bottom of that furrow. Once you sweep that top inch of dry dirt away it’s nice moist ground you’re getting into. The scrapers are durable; I would say they’d outlast 3:1 to an OEM scraper. I would recommend Atom-Jet to anybody with the experience I’ve had. In fact, I would recommend buying nothing but Atom-Jet for this drill.”



SINGLE SHOOT SCRAPER

Left DECL00
Right DECR00



DUAL SHOOT LIQUID SCRAPER

1/4" Left DEBLB2
Right DEBRB2
3/8" Left DEBLB3
Right DEBRB3
1/2" Left DEBLB4
Right DEBRB4



PATENT PENDING UHMW INSERT



David Armstrong
Gladstone, MB

“ I chose Atom-Jet scrapers for this drill just for the fact that I'd be able to side band liquid fertilizer. It's important that we try to minimize our passes across the field. With these scrapers, we can put down a full rate of fertilizer in one pass while still being seed safe. The durability on these openers has been excellent. We've run them through some land with lots of stones and I was surprised to see that there was no damage on them at all. I would recommend Atom-Jet for their great customer service, and as for the scrapers what we've seen over the first couple thousand acres has been excellent. ”

CASE IH SDX SYSTEMS

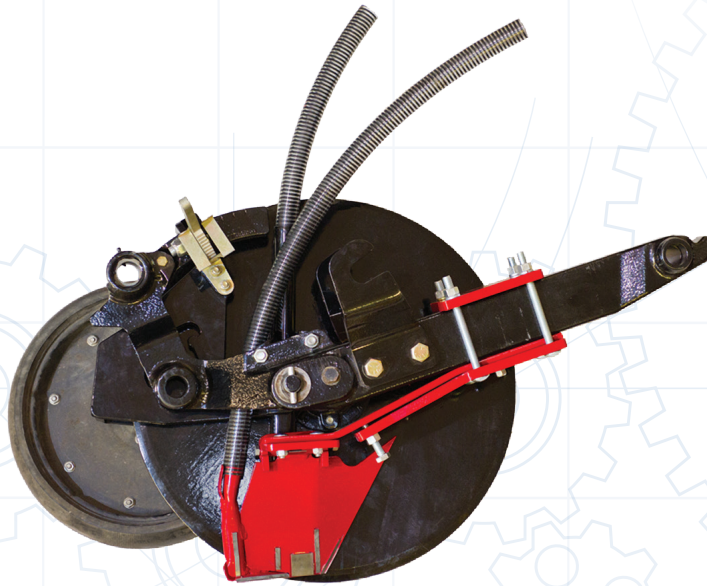
When producers need to reshape their drills into a one pass double-shoot system they came to Atom-Jet to develop a solution. Faced with a challenge, the R&D team, working together with farmers were able to provide a system to allow growers to double shoot with the SDX drill. The scrapers have all the hard-wearing benefits Atom-Jet is known for, with the ability to seed in one pass.



Mike Kula
Gettysburg, SD

“The Atom-Jet SDX Double Shoot scrapers are a big timesaver! I get all of my fertilizer down in one pass when seeding winter wheat so I don't have to come back and top dress in the spring. The fertilizer is placed below the seed where you get the most out of it and helps produce the greatest yield.

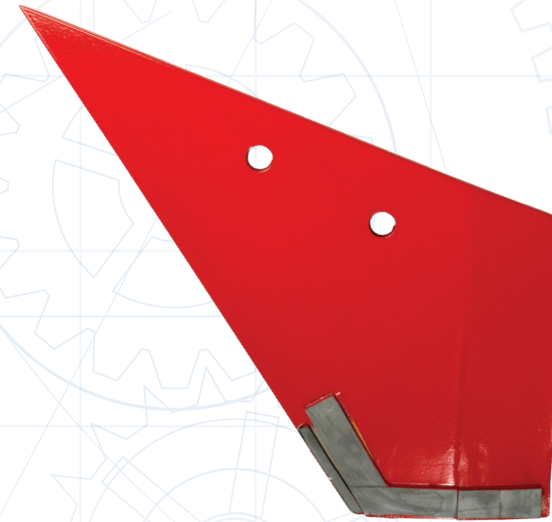
The openers work very well in both wet and dry seeding conditions. Atom-Jet visited my farm and helped me make sure the openers were set right and answered all of my questions. I would recommend these openers to anyone. I can't wait to get the new drill I just purchased with Atom-Jet SDX Double Shoot openers in the field.”



GRANULAR Left DAAL00 Right DAAR00
LIQUID Left DABL00 Right DABR00

SDX PRECISION DISK DOUBLE SHOOT SYSTEM

- Improved Seed Ledge
- Firm Seed Bed
- Improved Seed Placement
- Improved Germination
- Save Fuel and Time by Making Less Passes
- Granular and Liquid Options
- Carbide Protected Scraper



Left DACL00 Right DACR00

SDX CARBIDE SCRAPER

- Carbide Protection
- Increased Scraper Life
- Reduced Time Changing Scrapers
- Same Size as OEM Scraper

“ I had people coming from miles away to see the emergence I got with my Atom-Jet double shoot SDX scraper. This year in adverse conditions I had the best catch I have ever had on my canola. They performed better than we could have ever imagined in heavy trash and the field finish was like nothing I have ever seen. I seeded my peas and lentils and didn't need to roll the field! In all my crops the seed and fertilizer looked hand placed! I got more done and did a better job with my 40' SDX at 6.5 mph than my neighbors did at 4.5 mph with a 60' drill. Putting Atom-Jet's on our SDX was the best decision we have made on our farm in a long time. ”

Rick Zesko
Rycroft, AB

NH3 FERTILIZER KNIVES

Our NH3 fertilizer knives solve freezing issues by utilizing a nylon insert to keep the blade insulated from the NH3. This maintains a true 3/4" knife, allowing for excellent sealing, minimal disturbance, and low draft. Inspired design means all NH3 blades can be adjusted up to 1" for wheel tracks.

- Universal fit for most front mount and side mount applications
- Available with non-freeze technology
- Carbide tipped for extended wear
- 1/2" thick high carbon shank
- Fits Salford, John Blue, DMI, Blue Jet, Tormaster, and most others
- Side mount knives available in 13", 15", or 17"
- Available with .125", .375", or .500" tube



Malcolm Murray
Neepawa, MB

“ The Atom Jet NH3 non-freeze knives wear extremely well in heavy, stony soils. On my original set of knives I have approximately 15,000 acres with lots of acres left on them. I have never had any problem with freezing with the non-freeze knife. I like how easy these knives are to change—just take out the bolt and the blade comes out if the bolt is tightened properly. ”



FRONT MOUNT NON-FREEZE

KBBN4C



FRONT MOUNT REGULAR

KBBR4C



SIDE MOUNT NON-FREEZE

13" KA3N40
15" KA5N40
17" KA7N40



SIDE MOUNT REGULAR

13" KA3R40
15" KA5R40
17" KA7R40



KNOCK-ON NON-FREEZE

Nichol	KBBN40XK2
BOR 200	KBBN40XK3
BOR 400	KBBN40XK4



INSULATED NH3 INSERT FOR SINGLE SHOOT OPENERS

CZMFN4

Insert can be used on all Atom-Jet single shoot openers to provide a fertilizer option without the need for a second piece of equipment. Simply place the insert in the seeding tube and attach the NH3 lines.

POTATO HILLER TINES

Atom-Jet's Carbide hiller tines were built to enhance the performance of your Power Hilling Machinery, no matter what model you use.

If you're looking to reduce not only your maintenance costs, but replacement as well, Atom-Jet's use of high-strength, abrasion-resistant steel and carbide protection ensure uniform hills & lasts up to 8 times longer than others on the market.



Tyler Knutzen
Burlington, WA

“Knutzen Farms have been using Atom-Jet tines on the hillers and tillers for two years and we are very impressed. They have outlasted the OEMs and we will still get two more years out of the Atom-Jets.”

Knutzen Farms plants 1000 acres of potatoes near Burlington, Washington.



**STRUICK POWER
HILLER TINE**

PG1TF0



**STRUICK POWER
HILLER TINE**

PA1TF0



**BAUMAN
POWER HILLER
TINE**

PC1TF0



**BASELIER
POWER HILLER
TINE**

$\frac{3}{8}$ " PB1TF0
 $\frac{1}{2}$ " PB2TF0



**RUMPSTAD
POWER HILLER
TINE**

PD1TF0



**RUMPSTAD
POWER HILLER
TINE**

PD2TF0

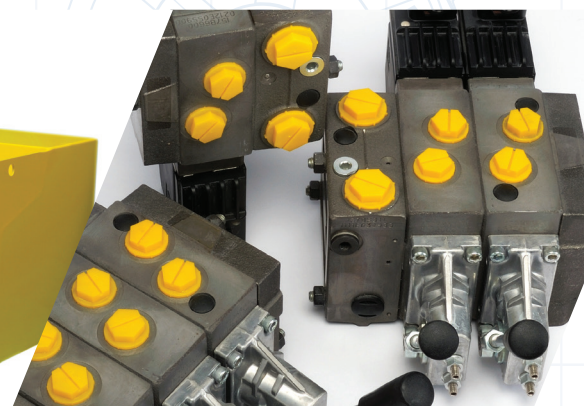
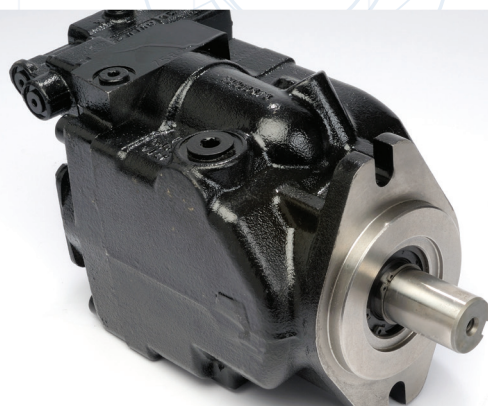
HYDRAULICS

CLOSED-CENTER SYSTEM

FOR HIGH DEMAND APPLICATIONS

Our Closed-Center, Load-Sensing systems match the capacity delivered by the pump to the load requirements. This allows for an increased range of flow without the headaches of overheating issues. Providing an additional 40 gpm at 3,000 psi, we ensure you won't be left short when you need power.

- Compatible with:
 - Air Cart Fans
 - Grain Carts
 - In-Cab Flow Control
 - Sprayers
 - Active Shank Drills





OPTIONAL UPGRADES

Quick Couplers $\frac{3}{4}$ "

Heat Exchanger Radiator Mounted or Electric Fan Blown

Hydraulic Kits are available only for listed models.

Atom-Jet Hydraulic Kits are manufactured by the experts at our Glendale Industries facility, at 1520 Charles Street, Brandon, MB.

TRACTOR MODELS AVAILABLE

Versatile	750, 800, 825, 835, 850, 855, 875, 895, 900, 935, 945, 950, 955, 975
Ford/Versatile Designation 6	936, 946, 956, 976 (with 855 Cummins Engine only)

SYSTEM SPECIFICATIONS

Type	Closed-Center, Load-Sensing
Hydraulic Flow	40 Gallon Per Minute
Maximum Pressure	3,000 Pound Per Square Inch
Control Valving	Proportional Spool
Control Type	12 VDC Proportional Joystick
Hydraulic Reservoir	Versatile Tractors: Add-On 30 Gallon Capacity All Others: Existing Reservoir

HYDRAULICS

OPEN-CENTER SYSTEM

FOR BASIC APPLICATIONS

Our Open-Center hydraulic system provides an economical solution for custom designed single-motor applications that only require one set of quick couplers.

This system is complete with in-cab joystick control and can be specifically matched to your application with flow ranges of 18, 23 and 26 gpm at 3,000 psi.

Whether it's driving an air fan or controlling a water pump, our Open-Center applications can be designed to address a variety of needs.



Brad Martens
Gladstone, MB

“ The Atom-Jet hydraulic kit for my Case 9280 is very easy to use and install. It came with instructions that made for a very simple installation and setup that didn't take a genius. Atom-Jet has treated us very well with excellent service and communication. We really appreciated Atom-Jet coming to the farm to troubleshoot any concerns we may have had. The kit has given the tractor the ability to do jobs that it couldn't handle before. ”



TRACTOR MODELS AVAILABLE

Versatile	750, 800, 825, 835, 850, 855, 875, 895, 900, 935, 945, 950, 955, 975
Ford/Versatile Designation 6	936, 946, 956, 976 (with 855 Cummins Engine Only)
Case IH Steiger 9100, 9200 & 9300 Series	Transmission Mount Pump: with Power-Shift Transmission, without PTO or 3-Point Hitch Engine Mount Pump: 855 & N14 Engines

SYSTEM SPECIFICATIONS

Type	Open-Center
Hydraulic Flow	18, 23 & 26 Gallon Per Minute Configurations
Maximum Pressure	3,000 Pound Per Square Inch
Control Valving	Proportional Spool
Control Type	12 VDC Proportional Joystick
Hydraulic Reservoir	Versatile Tractors: Add-On 30-Gallon Capacity All Others: Existing Reservoir

OPTIONAL UPGRADES

Quick Couplers	$\frac{3}{4}$ "
Heat Exchanger	Radiator Mounted or Electric Fan Blown
Tractors With Dozer Blades	Versatile Kits Can Be Supplied Without Reservoir If Tractors Are Equipped With A Dozer Blade

Hydraulic Kits are available only for listed models.

Atom-Jet Hydraulic Kits are manufactured by the experts at our Glendale Industries facility, at 1520 Charles Street, Brandon, MB.

PARTS & ACCESSORIES



A replacement part for non-freeze NH3 Knives with a 1/2" tube. 2 roll pins included.

KZMB40



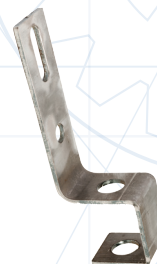
A replacement part for non-freeze NH3 knives with 2 x 1/2" tubes for vapor

KZMB4V



The NH3 blade holder. Holder bolts onto shank, blade slides into holder.

KZMBH0



The bracket that holds the hose as it comes off the non-freeze blade

KZMHB0



The piece of steel that welds onto NH3 knife which the UHMW fits into

KZMUCF



GR8 1/2 x 2-1/2" carriage bolt, lock nut, washer

CZM0AA



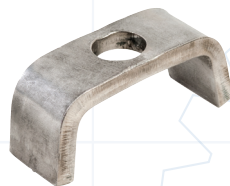
GR8 3/8" x 2-1/4" carriage bolt, lock nut

CZM0AB



C-Shank bolt holder for John Deere

CZMFBH



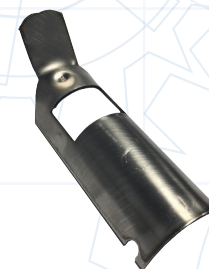
1/4" Shim for a 54° shank

CZNJ00



3/16" Shim for a 47° shank

CZNK00



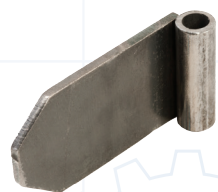
Hose reducer. Tube spacer for 1-1/4" - 1" hose

CZD0TF

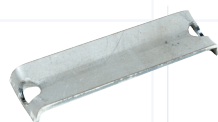


Insulated NH3 insert

CZMFN4



Deflector for John
Deere hoeddrill opener
EZDBD0



Bourgault Paralink
shim
CZNA00



C-Shank granular
chute
Left CZFCLF
Right CZFCRF



Morris Maxim /
Bourgault Paralink
granular chute
Left CZFBLF
Right CZFBRF



Contour / CNH
precision hoe granular
chute
Left CZFALF
Right CZFARF



C-Shank twin band
chute
Left CZFFLF
Right CZFFRF



Morris Maxim /
Bourgault Paralink
twin band chute
Left CZFELF
Right CZFERF



Paired row splitter.
Piece that separates
seed and fertilizer
CZLFB0
CZLCB0



C-Shank top
CZTA00



Edge on top
CZTB00



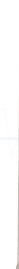
1/8" & 1/4" Max quip
tube
Twin Band CZG0M12
Side Band CZG0N12



1/4" side band liquid
tube for C-Shank /
edge on
CZGFC2



1/4" Side band liquid
tube for contour/
precision hoe
Left CZGEC2L
Right CZGEC2R



1/4" paired row liquid
tube
CZGFF2



1/4" paired row
liquid tube for Morris
Contour and CNH
openers
CZGEF2



3/8" SPF tube for
C-Shank openers
CZGFA3



Tube separator
CZLFA0



Contour / precision
hoe tube separator
CZLEAF



Focus strip
CZLFF0



Piece of steel welded
on to front of opener
to protect liquid line
from trash
CZD0EF



Hose Size Reducer
CZM0R0

Atom-Jet Industries 2-Year Limited Warranty – Ag Products
Atom-Jet Industries 1-Year Limited Warranty – Hydraulic Systems

Atom-Jet Industries (2002) Ltd. warrants each new product to be free from defects in material and workmanship. This warranty is applicable only for the normal service life expectancy of the product or components, not to exceed 24 consecutive months (12 consecutive months for hydraulic systems) from the date of delivery of product to the original purchaser. Proof of purchase is required. Warranty is limited to the replacement of the failed product.

Under no circumstances will the warranty cover any products or components thereof, which, in the opinion of the company, has been subject to misuse, unauthorized modification, alteration, and accident or if repairs have been made with parts other than those obtainable through Atom-Jet Industries (2002) Ltd.

Our obligation under this warranty shall be limited to repairing or replacing, free of charge to the original purchaser, any part that, in our judgment, shall show evidence of such defect, provided further that such part, if so requested shall be returned within forty-five (45) days from date of failure to Atom-Jet Industries (2002) Ltd. routed through the dealer and/or distributor from whom the purchase was made, transportation charges prepaid.

This warranty shall not interpret to render Atom-Jet Industries (2002) Ltd. or dealer liable for injury or damages of any kind or nature to person or property. This warranty does not extend to the loss of crops, loss due to delay in harvest, or any expense or loss incurred for labor, substitute machinery, rental or other reason.

Except as set forth above, Atom-Jet Industries (2002) Ltd. shall have no obligation or liability of any kind on account of any of its equipment and shall not be liable for special or consequential damages. Atom-Jet Industries (2002) Ltd. makes no other warranty, expressed or implied, and, specifically, Atom-Jet Industries (2002) Ltd. disclaims any implied warranty.

This warranty is subject to any existing conditions of supply which may directly affect our ability to obtain materials or manufacture replacement parts.

Atom-Jet Industries reserves the right to make improvements in design or changes in specifications at any time, without incurring any obligation to owners of units previously sold.

No one is authorized to alter, modify or enlarge this warranty nor the exclusion, limitations and reservations of the warranty stated above.

Disclaimer: Atom-Jet Industries reserves the right to make improvements in design and changes in specifications at any time without notice and without incurring any obligation to install them on units previously sold. Specifications, descriptions and illustrative material herein are as accurate as known at the time of publication but are subject to change without notice.

With double shoot openers, the placement of the seed and fertilizer is very important. The amount of fertilizer that can be applied with any double shoot opener depends to a great extent on the degree of separation between the fertilizer and the seed, but also depends on a number of other variables such as the amount of moisture in the soil, the amount of organic matter in the soil, the soil type and the type of crop being seeded. It is our policy that we do not recommend or endorse specific "safe" rates of fertilizer for our double shoot openers. We suggest that producers consult with their local agronomist for their expertise on specific fertilizer rates for their application.



13-AJ-CA-AG-E-64559-1-WP